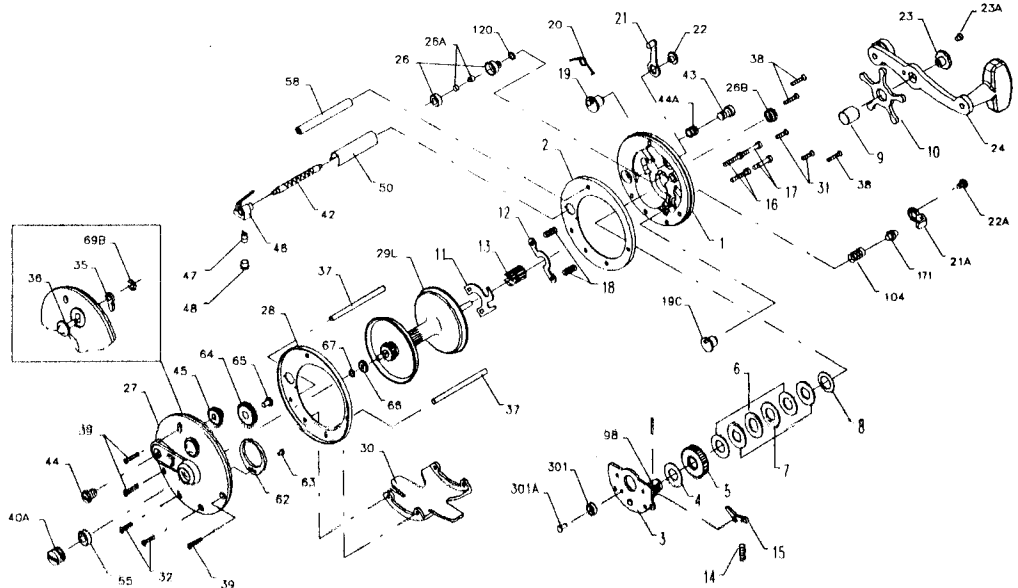




# PARTS AND PRICE LIST FOR MODELS 10 AND 210



Key No.	Part No.	Description	Price	Key No.	Part No.	Description	Price
1	001 010	R.S. Plate	\$6.25	29M	029M210	Spool Metal	\$14.50
	001 210	R.S. Plate	6.95	30	030 010	Stand	5.25
2	002 010	R.S. Ring	2.85		030 066	Stand (210)	6.60
	002 210	R.S. Ring	3.15	31	031 010	R.S. Stand Screw (2 req.)	.40
3	003 010	Bridge w/Sleeve	6.25		031 210	R.S. Stand Screw (2 req.)	.40
	003 210	Bridge w/Sleeve	6.50	32	032 002	L.S. Stand Screw (10) (2 req.)	.40
4	004 155	Fiber Washer (10)	.45		032 022	L.S. Stand Screw (210) (2 req.)	.40
	004 060	Fiber Washer (210)	.45	33	033 113	Rod Clamp (210)	4.00
5	005 010	Main Gear	4.50	*	*033R200	Ringed Rod Clamp (Optional) (210)	6.25
	005 500	Main Gear (210)	5.10	34	034 045	Rod Clamp Screw (210)	1.00
6	006 060	Drag Washer (10)	.65	34C	034C045	Rod Clamp Screw w/Nuts	2.50
	006 309	Drag Washer (210)	.90	35	035 155	Click Tongue	1.00
7	007C060	Metal Drag Washer (Set) (10)	2.70	36	036 060CH	Click Button (10)	1.10
	007C500	Metal Drag Washer (Set) (210)	3.00		036N209	Click Button (210)	1.05
8	008 060	Tension Spring	.50	37	037 010	Frame Post (10) (2 req.)	1.65
9	009 060	Spacing Sleeve	.90		037 160	Frame Post (210) (2 req.)	1.65
10	010 060	Star Drag (10)	2.85	38	038 010	R.S. Post Screw (3 req.)	.40
	010 505	Star Drag (210)	3.50		039 006	R.S. Post Screw (210)	.40
11	011 009	Eccentric Jack (10)	1.25	39	039 001	L.S. Post Screw (10) (3 req.)	.40
	011 155	Eccentric Jack (210)	1.25		038 008	L.S. Post Screw (210)	.40
12	012 009	Pinion Yoke (10)	.90	40	040 210	L.S. Bearing Cap Only	3.05
	012 155	Pinion Yoke (210)	.90	40A	040A 210	L.S. Bearing Cap w/Bearing (210)	8.50
13	013 010	Pinion Gear	3.30	42	042 109	Worm (10)	2.55
	013 140	Pinion Gear (210)	3.55		042 209	Worm (210)	2.80
14	014 500	Dog Spring (10)	.45	43	043 009	R.S. Worm Bearing (10)	1.60
	014 010	Dog Spring	.50		044N109	R.S. Worm Bearing (210)	1.70
15	015 010	Dog	.90	44	043 109	L.S. Worm Bearing (10)	1.60
	015 210	Dog	.90	44A	057 109	R.S. Worm Bearing Spring (210)	.65
16	016 009	Lower Bridge Screw (10) (2 req.)	.45	45	045 009	Worm Gear (10)	1.75
	016 060CH	Lower Bridge Screw (210) (2 req.)	.45		045N209	Worm Gear (210)	1.90
17	017 009	Upper Bridge Screw (9) (2 req.)	.45	46	046 009	Line Guide (10)	2.70
	017 060CH	Upper Bridge Screw (210) (2 req.)	.45		046 209	Line Guide (210)	2.80
18	018 009	Clutch Spring (10) (2 req.)	.45	47	047 109	Pawl	.65
	018 060	Clutch Spring (210) (2 req.)	.45	48	048 109	Pawl Cover	.80
19	019 009	Eccentric (10)	2.00	50	050 109	Worm Shield (10)	1.25
	019 209	Eccentric (210)	2.05		050 209	Worm Shield (210)	1.30
19C	019C010	Direct Drive Eccentric (10)	2.05	55	055 113H	Spool Bearing (10 & 210)	9.00
20	020 109	Eccentric Spring (10)	.45	58	058 109	Slotted Post (10)	1.95
	020 155	Eccentric Spring (210)	.45		059 210	Slotted Post (210)	2.15
21	021 109	Eccentric Lever (10)	1.60	62	062 209	Click Spring	1.50
	021 285	Eccentric Lever (210)	1.60	63	063 209	Click Spring Screw	.50
21A	021 010	Direct Drive Lever (10)	1.60	64	064 009	Idler Gear (10)	1.75
	022 109	Eccentric Screw (10)	.50		064 209	Idler Gear (210)	1.80
22	022 109	Eccentric Screw (210)	.55	65	065 209	Idler Gear Screw	.50
	022 060CH	Direct Drive Lever Screw (10)	.50	66	066 009	Level Wind Drive Gear (10)	1.50
22A	022 109	Direct Drive Lever Screw (10)	.50		066 209	Level Wind Drive Gear (210)	1.60
23	023 060	Handle Screw	1.75	67	067 009	Drive Gear Lock Spring (10)	.40
23A	110 060	Handle Lock Screw	.45		067 209	Drive Gear Lock Spring (210)	.40
24	024 155	Handle (10)	7.25	69B	069B600	Click Button Retaining Ring	.90
	024 066	Handle (210)	7.60	98	098 155	Gear Sleeve (10)	3.50
26	026 010	R.S. Bearing (10)	12.90		098 505	Gear Sleeve (210)	4.00
	026 113H	R.S. Bearing (210)	12.00	104	104 010	Direct Drive Spring (10)	.40
26A	040A910	Pressure Plug (10)	.80	120	120 910	"O" Ring (10)	.50
26B	026B910	R.S. Bearing Cap (10)	1.15	149	149 045	Clamp Nut	1.00
27	027 010	L.S. Plate Assembly	8.75	149A	149 200	Hex Nut	.50
	027 210	L.S. Plate Assembly	8.00	171	171 140	Direct Drive Plunger (10)	.50
28	028 010	L.S. Ring	2.85	301	301 010	Magnet (10)	10.90
	028 209	L.S. Ring	3.15	301A	301A010	Magnet Stud (10)	1.60
29L	029L010	Spool (Aluminum)	15.30				
	029L210	Spool (Aluminum)	15.60				